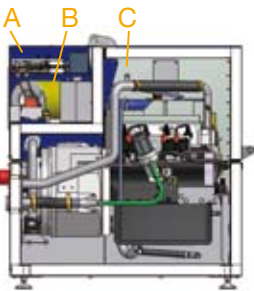




Technical Data Sheet

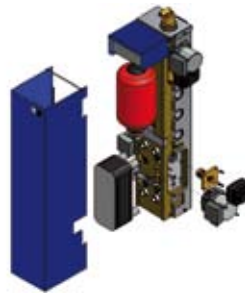
XRGI 15G-TO Energy System

Power Unit



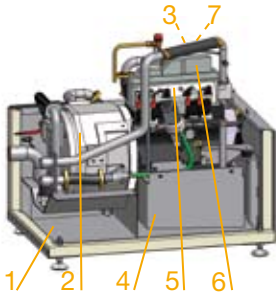
- A** Electrics and safety circuit enclosure
- B** Ventilated enclosure for gas safety tray
- C** Heat and noise shield for engine

Heat Distributor



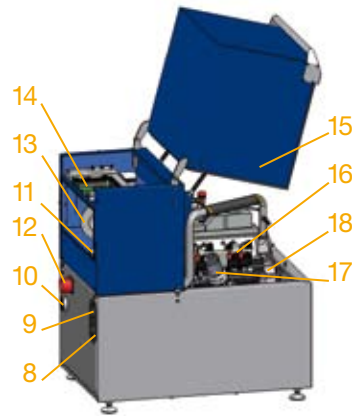
- Connection for Power Unit (separate cooling circuit)
- Connection for central heating
- Connection for storage tank
- Engine water temperature control
- Supply temperature control
- Surveillance of storage tank
- Surveillance of component status
- Control of boiler (parallel operation)
- A. o.

Engine



- 1** Silencer
- 2** Water cooled generator
- 3** Exhaust gas heat exchanger (not visible)
- 4** Oil sump
- 5** Toyota gas engine
- 6** Oil separator
- 7** Oxydation catalyst (not visible)

Installation and Service



- 8** Water connection (return)
- 9** Water connection (supply)
- 10** Exhaust gas connection
- 11** Gas connection
- 12** Main power connector
- 13** Air filter
- 14** Gas safety tray
- 15** Lid with gas springs
- 16** Spark plugs
- 17** Oil filter
- 18** Oil filler cap

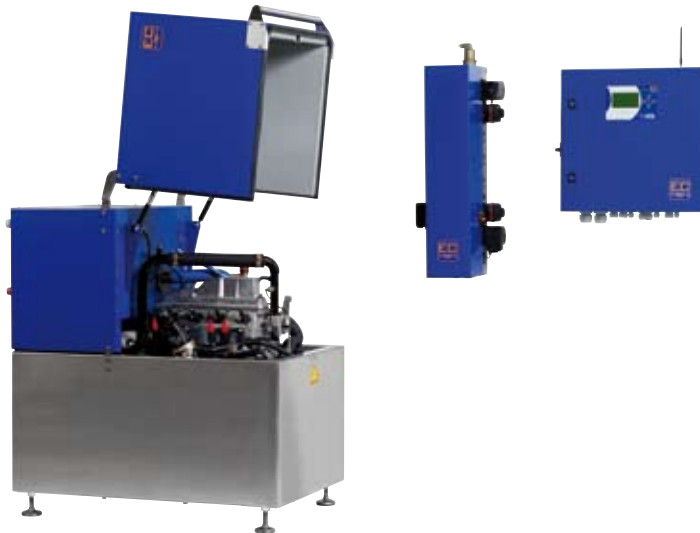
Control Panel



- Regulates out-put and operation
- Control operations
- Provides data capture, analysis and reporting to service database
- Grid monitoring

Electrical output	15.2 kW (modulating from 6 kW)
Electrical efficiency – maximum	30% +/- 0,5%
Thermal output	30 kW (modulating from 17 kW)
Total efficiency	Up to 92 %
Consumption	26 - 50 kW
Emissions	Below DVGW VP 112 regulations (<TA Luft regulations)
Service interval	8,500 h
Lifetime engine	Designed for 40,000 hours of operation without overhaul
Noise level	< 49 dB(A) at 1 m distance

Micro
CHP
System



Product Specifications

XRGI 15G-TO Energy System

OUTPUT

Mechanical performance @ 1535 rpm	16.5 kW
Electrical efficiency – maximum	30% +/- 0.5 %
Electrical output	15.2 kW (modulating from 6 kW)
Thermal output	30 kW (modulating from 17 kW)
Electrical efficiency at partial load.	More than 27% at > 9 kW elec.
Total efficiency.	Up to 92 %
Consumption.	26-50 kW

SYSTEM COMPONENTS

Power Unit

Cabinet	Double walls, 1.5 + 2 mm steel plate, stainless steel, painted
External dimensions (H x W x D)	1250 x 750 x 1110 mm incl. pipe connectors
Insulation	50 mm mineral wool
Weight	700 kg
Engine	Toyota Industries
Fuel	Natural gas L, LL, H, LPG, Butane, Propane
Cooling	Water cooled, engine and exhaust gas
Number of cylinders	4
Swept volume	2237 ccm
CO emission*	46 (partial load)/89 (full load) mg/m ³ at 5% O ₂
NO _x emission*	49 (partial load)/314 (full load) mg/m ³ at 5% O ₂
	*verified by TÜV SÜD, DVGW Prüfstelle
Generator	Asynchronous
Voltage	3 PHASE, 400 V
Maximum full load current, out	27 A
Nominal generator current	27 A
Cooling	Water cooled
Cos φ	0,8

Heat Distributor

External dimensions (HxWxD)	1005 x 370 x 342 mm
---------------------------------------	---------------------

Control Panel

External dimensions (HxWxD)	210 x 600 x 600 mm
Voltage	3 phases + N + Ground, 400 V
Max. fuse / cable connections	63 A / 16 mm ² Cu
Max. external temperature	40 ° C

Specifications are subject to change without prior notice